



Navy ENCLOSURE 2079-S-D01023

Features

Physical - can all be customized*

Standard

Dimensions (with stabilizers):	55" H x 24" W x 32" D
Weight:	390 lbs.
U's available:	27U
Shock & Vibration:	Externally isolated
Material:	Steel
Payload:	Up to 450 lbs

Installation - can all be customized*

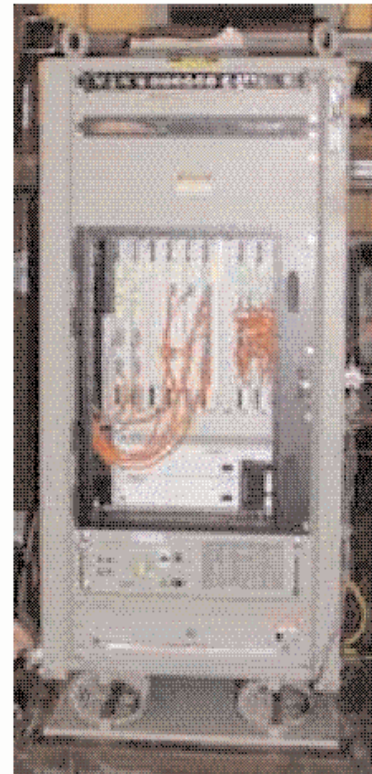
Vessel Interface:	Drop-in placement for xxxxx dual stage rack
Equipment:	19" EIA hole pattern front and back
I/O:	Through sectional rear panels

Configuration - can all be customized*

Removable side panels:	Louvered back panels
Equipment mounting:	Universal side mounting bracket
Grounding:	Bus bar, ground stud

Options Installed - can all be customized*

Power distribution:	6 channel PDU
UPS:	2 KVA UPS
Air cooling:	1.5 KW fan tray
Drawers:	1U slide mounted with shock pins
Cable management:	Pivoted cable retractors



Environmental Characteristics

Shock :	MIL-S-901D Grade A, Heavy weight
Vibration :	MIL-STD -167-1

901D Rackable Options

Cooling	PDU / FMU	UPS	PCU
VME/cPCI chassis	Drawers or Slides	FPD [LCD]	FPD [Plasma]
Keyboard / Display / KVM	Ethernet Media Converter / Switch	Extended Temperature Range	

All Features, Environmental Characteristics and Options can be customized to your program requirements*